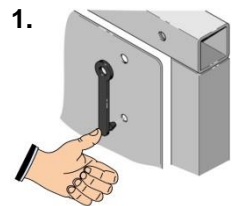
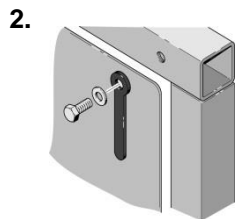


// ScrewClip: Mounting

Before mounting the ScrewClip, the mounting hole must be drilled



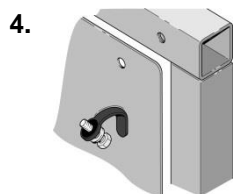
Press the mounting peg into the retaining hole.



Push screw (with washer) through the holes in the ScrewClip and in the guard.

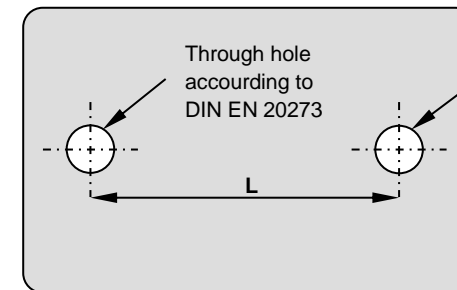


Screw tight. Done!



When the screw is released, it is still connected to the guard.

Mounting hole:



Mounting hole:

Ø6 ±0,1 for size 6 and 8
Ø8 ±0,1 for size 10

Distance between holes L

Size 6: 50 mm
Size 8: 50 mm
Size 10: 75 mm

Notes:

- We recommend that you calculate the diameter of the mounting hole on a case by case basis. The optimum diameter may vary, depending on the nature of the guard (sheet thickness, paint finish, etc.).
- It is best to mount the ScrewClip by hand. Simply align the mounting peg so it is straight and press firmly with your thumb to attach the ScrewClip.
- We recommend using the ScrewClip with a washer.
- You can combine the ScrewClip with any screw you like.